

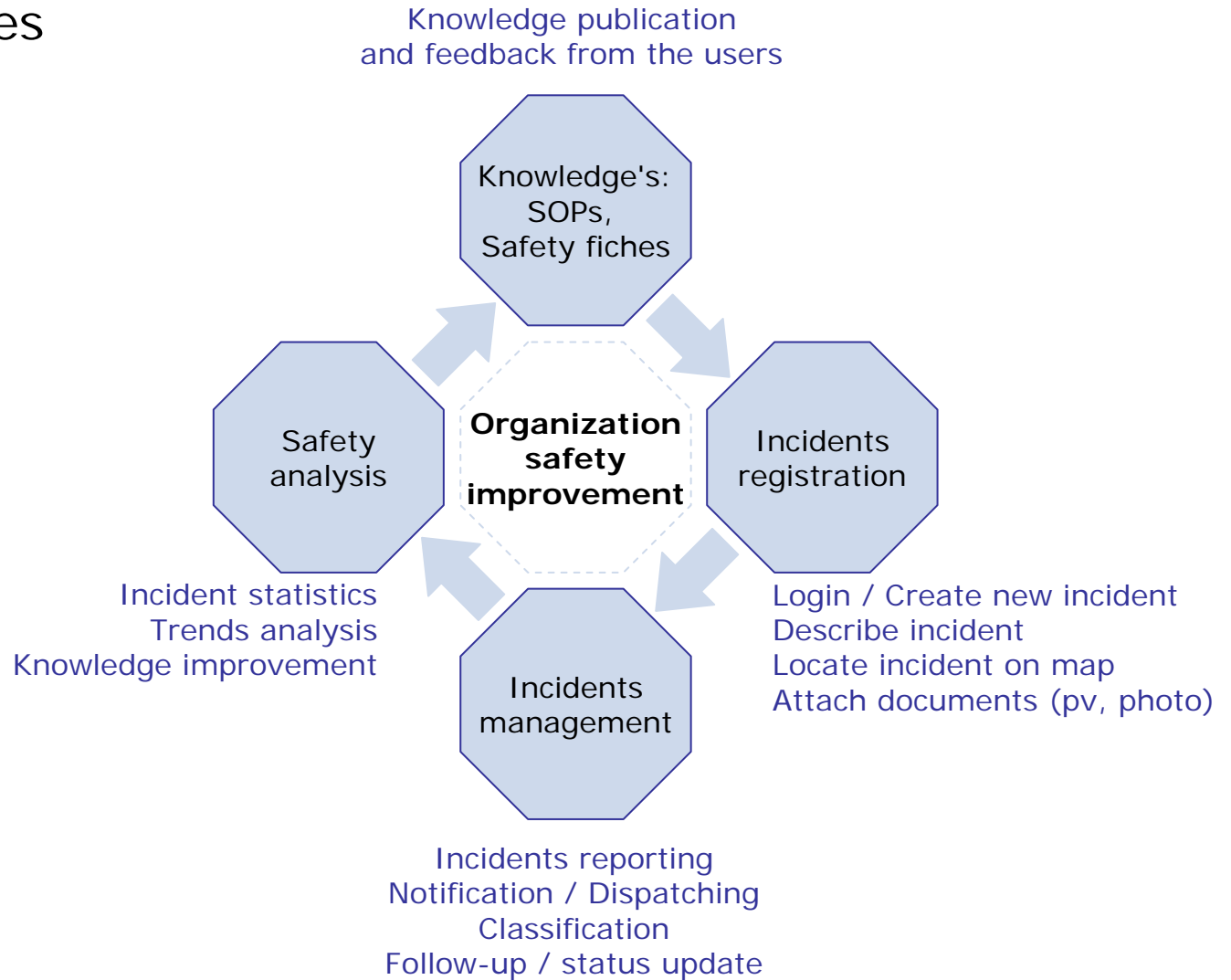
QT-registrations

The solution for large organisations
to support safety processes

Safety business processes



Safety processes in practice



Safety processes in practice

Knowledge's:
SOPs,
Safety fiches

The screenshot shows the website interface for 'Amsterdam Harbour' under the 'Safety centre' tab. The page features a header with navigation links (Visitor, Safety centre, Memberlist, Search, Register, Log in) and a main banner image of a container ship. Below the banner, the 'Safety centre' section is organized into three main categories: Operation Procedures, Harbor safety, and Log Books. Each category contains a list of items with details on their last message, tickets, and replies.

Operation Procedures		Last message	Tickets	Replies
	SOP - Landside Standard procedures for harbour operations	Today 9:16 [»] by Admin	6	0
	SOP - Marine Standard Procedures for marine operations	Today 8:51 [»] by Admin	2	0

Harbor safety		Last message	Tickets	Replies
	Incidents (without damages) Report here any incident without damage or near accident events.	8 Sep 2008 [»] by smith	1	2
	Accidents Report here any accident with damages.	25 Sep 2008 [»] by Admin	3	6

Log Books		Last message	Tickets	Replies
	Inspections results Results of the inspection rounds	8 Oct 2008 [»] by smith	4	0
	Income calls	8 Oct 2008 [»] by Admin	2	0

Safety processes in practice



New ticket

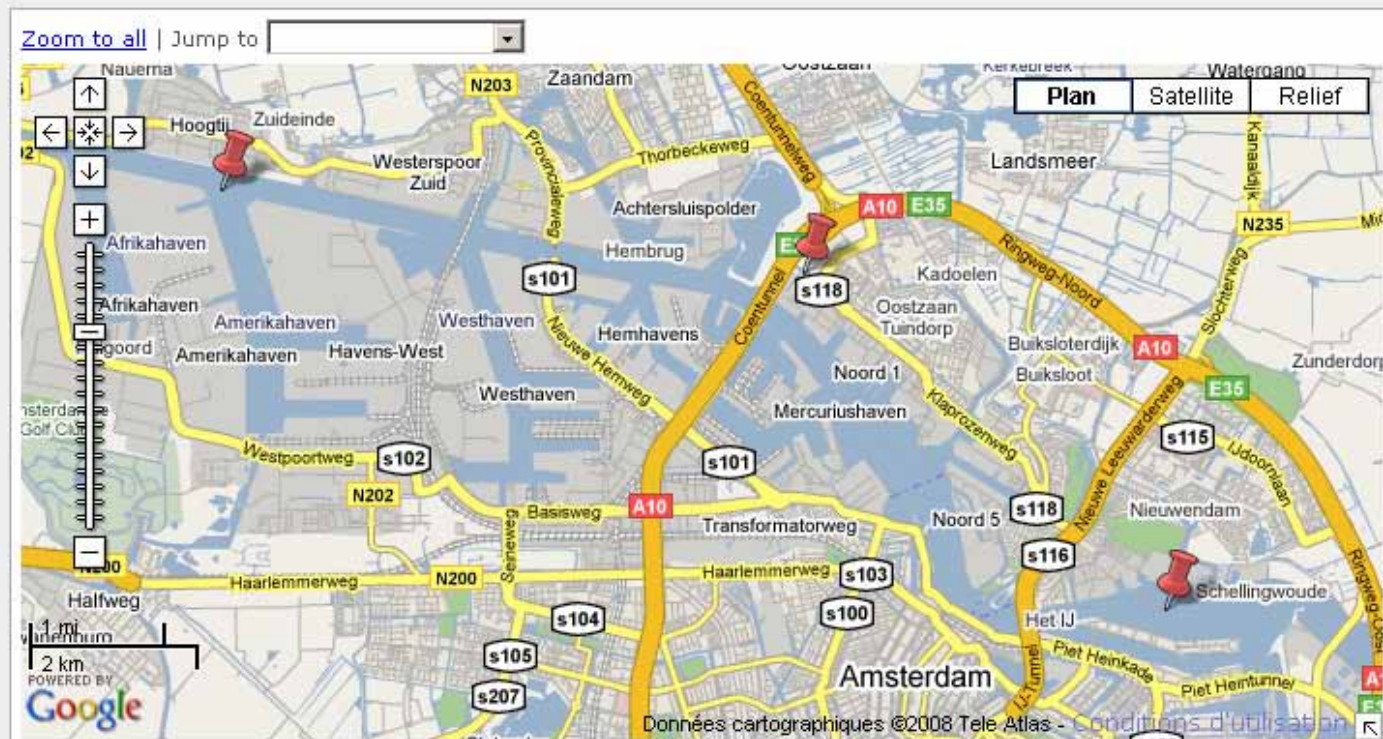
Style Status Send on behalf of

Title	<input type="text" value="Oil slick"/>
Incident date	<input type="text" value="2008-11-03"/> (yyyy-mm-dd)
Description	<p>B <i>I</i> <u>U</u> URL </p> <p>Minor oil slick detected during inspection round.</p>
Position	<p>If you wish, you can indicate your location Create point Undo changes</p> <p>Address, coordinates <input type="text" value="Einsteinweg, Amsterdam"/> <input type="button" value="Search"/></p>
	<p><input type="button" value="Preview"/> <input type="button" value="Send"/></p>

Safety processes in practice

Incidents management

Ref.	Title	Reported by	Last message ▾	Actor
003	Car accident	Admin 25 Sep 2008	25 Sep 2008 [»] by Admin	smith
002	Airplane crash	Admin 25 Sep 2008	25 Sep 2008 [»] by smith	smith
001	Abordage	Admin 8 Sep 2008	8 Sep 2008 [»] by jacksparrow	None



This page includes 3 tickets having position (from 3 tickets)

[Hide map](#)

Safety processes in practice



PDF

CSV
(Excel)

XML
(Data exchange)

QT registrations

001 In process Primary

Ref. 001

Title **Abordage**

Description Abordage between containers cargo BIRD OF PREY and USS-Enterprise. No injury.

Status In process

Reported by Admin, 8 Sep 2008 12:58

Meteo: Fog, visibility < 300m

Major injuries 1

Minor injuries 5

Pl(s) 17 crew members (12 in BIRD OF PREY, 5 in ENTERPRISE)

QT-cute, 2008-11-03 12:54

QT registrations

Classification

Category Marine ship incident

Severity High

Related messages

Abordage 8 Sep 2008 12:58 [1]

Abordage between containers cargo BIRD OF PREY and food cargo USS-Enterprise. No injury.

The board Administrator

(Admin)

8 Sep 2008 14:40 [2]

I was in the Radar Control Center during incident. The cargo BIRD OF PREY was not responding to our emergency call on approach frequency and on 121.5Mhz

Cpt. Jack Sparrow(Head of Radar Control Center)

(jacksparrow)

Related documents

abordage.jpg
(8 Sep 2008 12:58)

QT-cute, 2008-11-03 12:54 2/3

Safety processes in practice

Incidents management

Primary info
Context
Classification
Follow-up
Documents

Ref.

Title

Description


Incident date

Status

Reported by


Actor

Primary incident information




003 · Completed

Primary info
Context
Classification
Follow-up
Documents



Oil spill protection
25 Sep 2008



Car removal
25 Sep 2008

[Start editing](#)

Safety processes in practice



Statistics

Options

Year Section

Ok

Global **Global trends** Details Detailed trends Count

Global statistics

2008

[Per quarter](#) · [Per month](#) · [Last 10 days](#)

		Jan	Feb	Mar	Apr	May	Jun	Jul	Aug	Sep	Oct	Nov	Dec	Year
Tickets	■	0	0	0	0	0	0	0	0	6	8	8	.	22
Messages	■	0	0	0	0	0	0	0	0	14	8	8	.	30
Users*	■	0	0	0	0	0	0	0	0	4	3	1	.	4

[Value](#) · [Percent](#)

Tickets per month

0 0 0 0 0 0 0 0 0 6 8 8 0

Cumulative tickets per month

0 0 0 0 0 0 0 0 0 6 14 22 22

Global **Global trends** Details **Detailed trends** Count

Count

Fields

2008

[Per quarter](#) · [Per month](#) · [Last 10 days](#)

		Jan	Feb	Mar	Apr	May	Jun	Jul	Aug	Sep	Oct	Nov	Dec	Year
Major injuries	■	0	0	0	0	0	0	0	0	3	0	0	.	3
Minor injuries	■	0	0	0	0	0	0	0	0	9	0	0	.	9
Total	■	0	0	0	0	0	0	0	0	12	0	0	.	12

Users per month

0 0 0 0 0 0 0 0 0 4 3 1 0